

Tabletop Bases

You can rely on the stability, durability, and sturdiness of metal table bases from Rams Glen. Coordinate tabletops with bases from our select variety of finishes and colors. With a wide variety of models to choose from, you are assured to find the ideal mate to support your tabletop and complement your style of decor.

- **Stable**
- **Durable**
- **Sturdy**

Interior Finish

Powder Coat - Black Wrinkle is standard. Rams Glen can provide colors from numerous powder coat manufacturers or provide custom colors to harmonize with your sample swatch.

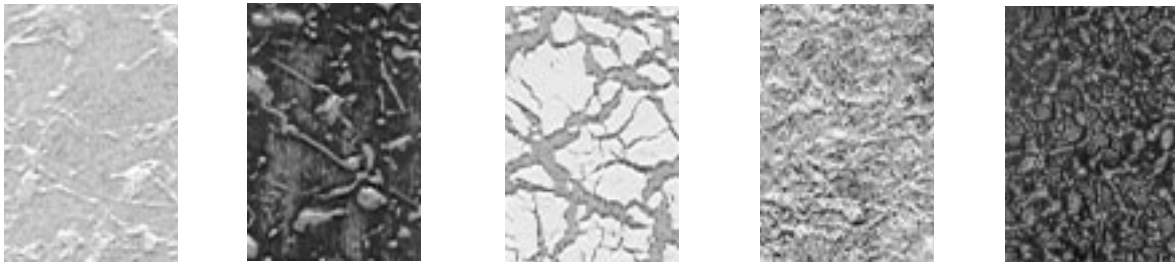
Polish Chrome - available in the AS, B, C, D, E, F, I and T Series.

Exterior Finish

Hammerite exterior finishes offer the same designer satin and antique finishes with the added durability that withstands outdoor conditions.

RAMS GLEN Designer Iron Finishes

Choose from a wide array of exquisite iron finishes to complement the elegance of QUARIZZ® stone surfaces and add that finishing touch to your table selection. Personalize your decor style by adding yet another design dimension offered to you by Rams Glen.



A random sampling of the many textures available for your selection from Rams Glen. Color chart and sample chips are available on request.

“Choose just the right custom iron finish to complement your QUARIZZ® stone surface tabletop selection . . .”

Tabletop Base Series Selection

Make your base selection from the various Base Series included in this catalog. Each series has its own distinctive details and features. For table stability, it is recommended that table bases are selected and installed per our specifications, otherwise, wobbling and tilting may occur.